



CHARU
AUTO INDUSTRIES

MANUFACTURES OF
AUTO PARTS FORGING

World
CLASS
QUALITY



Delivering Highest Levels of

Performance
& **Efficiency**

WWW.CHARUAUTO.IN



Company Profile

Established in 1995 Charu Auto Industries has a sole aim to render maximum client satisfaction, This is not possible without the support of a team. Thus, we have recruited a highly experienced and qualified team of professionals, who hold expertise in efficiently comprehending and accomplishing the specific requirements of clients. Our team consists of highly practised engineers, production personnel and technicians. We manufacture our products using high quality materials sourced from reliable industrial vendors. Moreover, our clients appreciate our hassle free operations, excellent performance as well as accurate dimensions and place repeated orders of these products

We have established a highly advanced and ruggedly constructed infrastructure, where we ably perform our all business related tasks as well as operations. To carry out hassle free activities, we have strategically partitioned our entire set up into varied other departments. Our infrastructure consists of production, administrative, sales and marketing, warehousing and packaging, research and development, quality control, logistics and several other departments. All departments are skill fully handled by specialized team of professionals, who cordially perform all activities and make timely delivery of bulk product range.

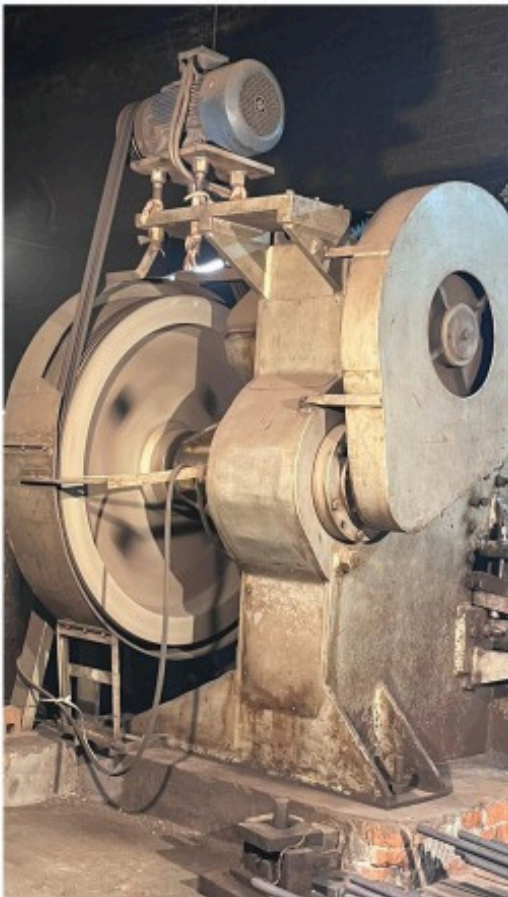


Quality Assurance

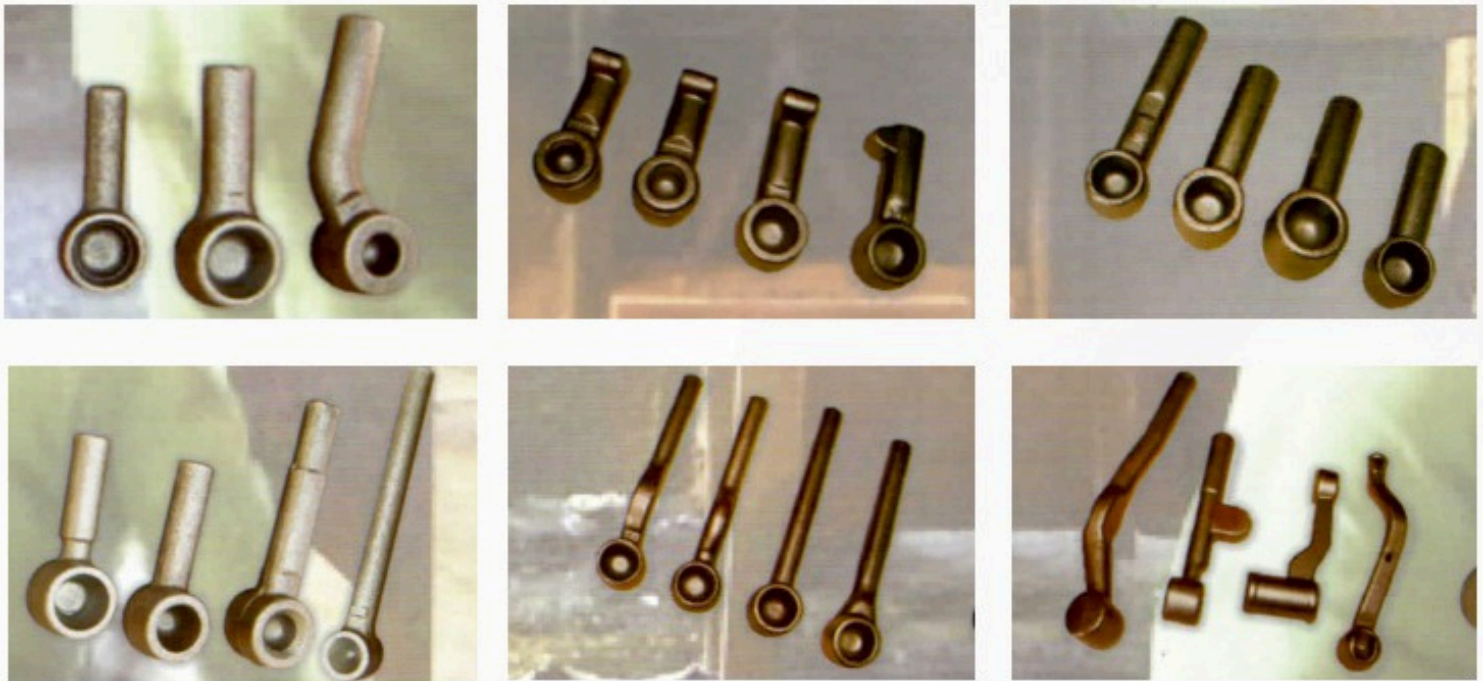
Quality is considered as the most important factor of our company, which we have maintained since the day one of our establishment. For this, a highly advanced quality control department has been established in our infrastructure, where our entire products go through rigorous checks by our experts. Backed by a team of highly experienced professionals, our company is ably fulfilling the accurate and growing requirements of clients. We provide regular training and conduct seminars for our employees, in order to keep them abreast of prevailing market tendencies. Besides, team working with us is committed, energetic as well as successfully attending clients by providing timely response to their queries and serves to the diverse needs efficiently. Leveraging on our in depth knowledge and vast industrial experience, we are fruitfully meeting the accurate demands of our valuable clientele.

Infrastructure

Our company is equipped with advanced infrastructural set-up, which improves our manufacturing capacity as well as enables us to perform specialized and standard business operations. We have developed an advanced production unit, which is installed with latest machines and technology. These machines are upgraded as per the advancement prevailing in industry, which enables us to cater to the upcoming demands of clients in a better way.



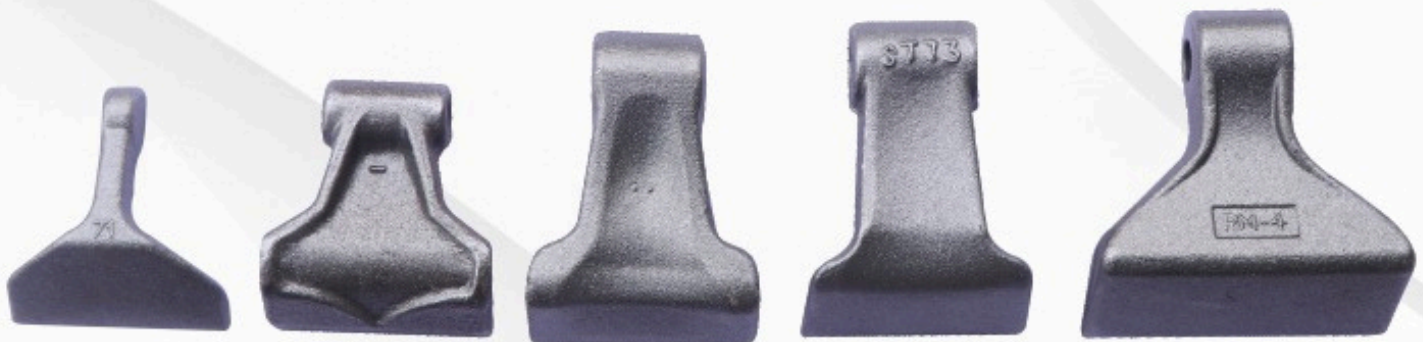
TIE ROD



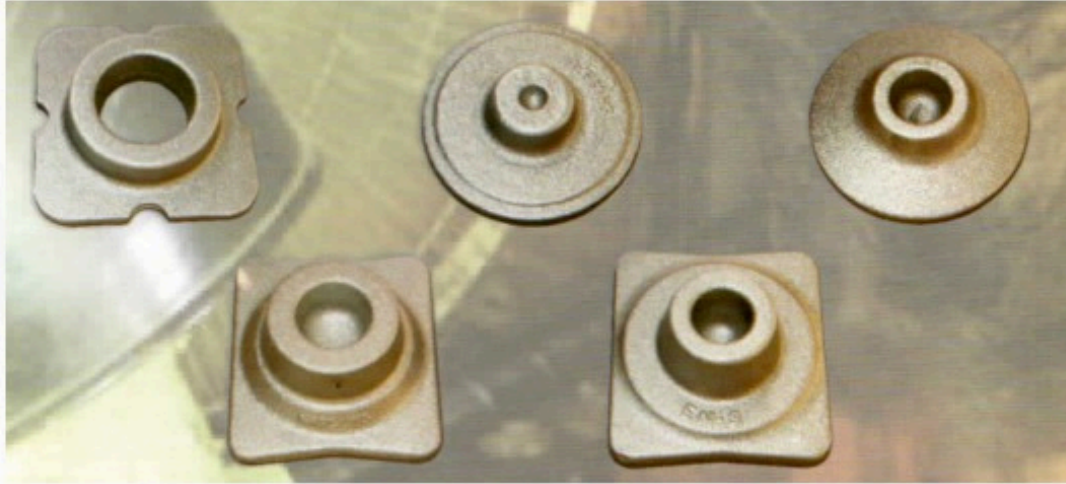
EYE BOLT



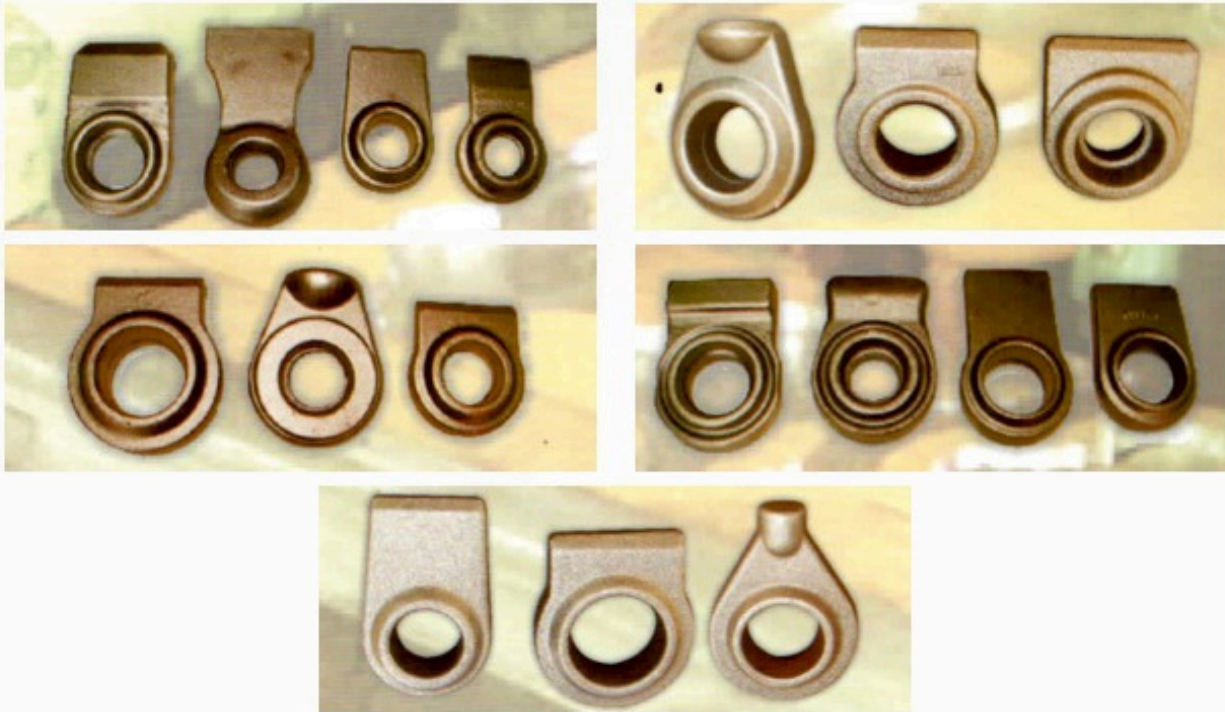
HAMMER BLADE



COUPLINGS



WELDON END



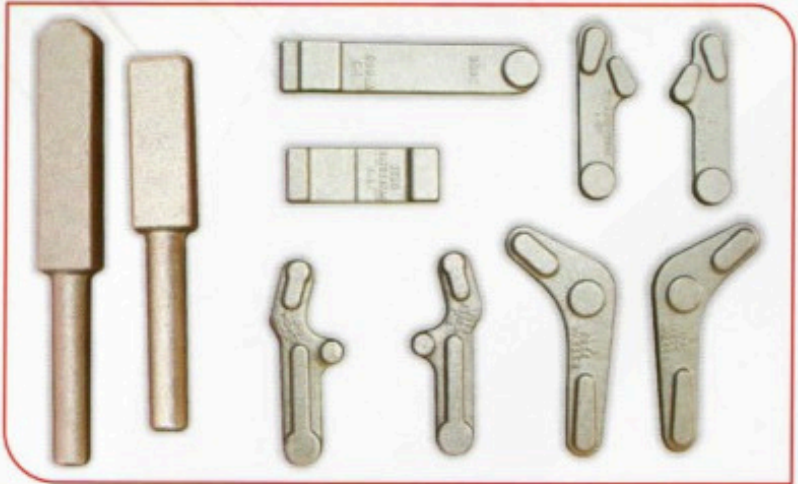
HITCH BALL



BALL JOINT



ALL TYPES OF FORGING







CONTACT US

Naveen Kumar +91 98780-23432

Eshan Aggarwal +91 95016-61111

Anish Aggarwal +91 76963-31111

Email : charuauto@gmail.com
info@charuauto.in

Phone No. : +91 161 464 2040

Company Address:

C-74, Phase - V, Focal Point,
Ludhiana, Punjab 141010

